

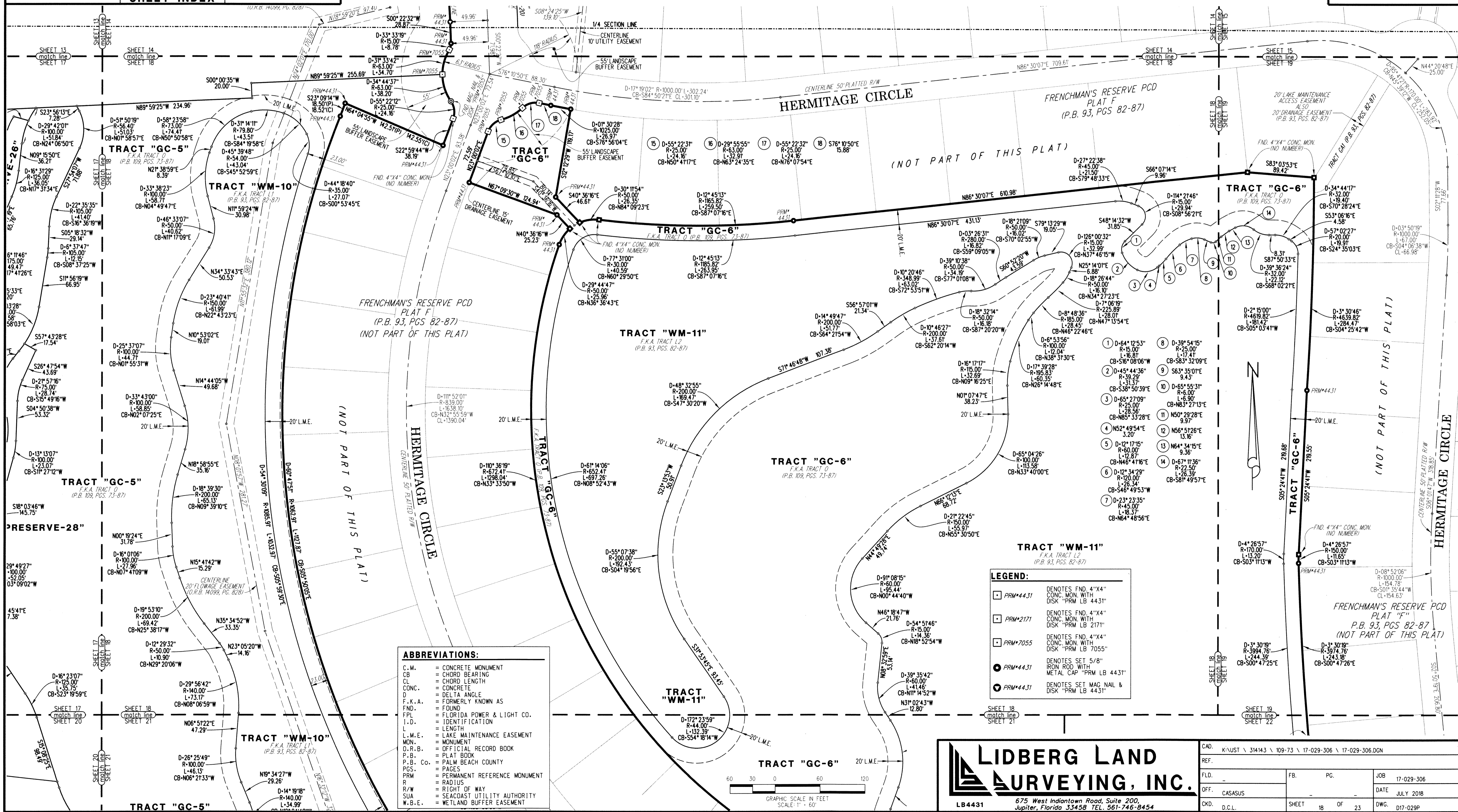
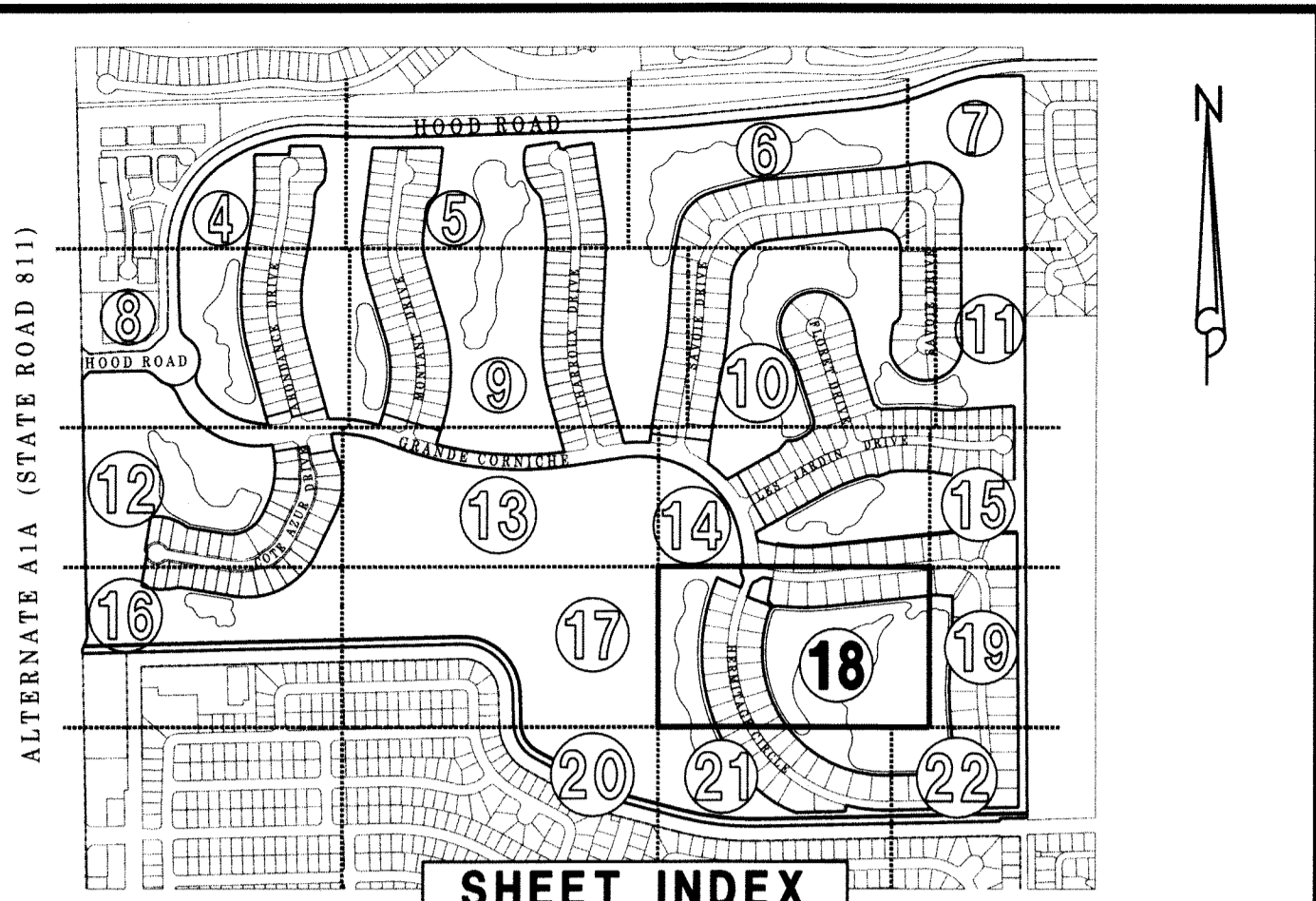
FRENCHMAN'S RESERVE PCD - GOLF COURSE REPLAT

BEING A REPLAT OF TRACTS L1, L2, W1, W2, W3 AND UP1, AS SHOWN ON FRENCHMAN'S RESERVE PCD - PLAT ONE, RECORDED IN PLAT BOOK 92, PAGES 11 THROUGH 20, AND A REPLAT OF TRACTS L, UP1 AND UP2, AS SHOWN ON FRENCHMAN'S RESERVE PCD - PLAT "A", RECORDED IN PLAT BOOK 92, PAGES 194 THROUGH 196, AND A REPLAT OF TRACTS G, L1, L2, UP1 AND W, AS SHOWN ON FRENCHMAN'S RESERVE PCD - PLAT F, RECORDED IN PLAT BOOK 93, PAGES 82 THROUGH 87, AND A REPLAT OF TRACTS L1, L2, W1, W2, W3 AND UP1, AS SHOWN ON FRENCHMAN'S RESERVE PCD - PLAT "D", RECORDED IN PLAT BOOK 93, PAGES 123 THROUGH 128, AND A REPLAT OF TRACTS A, B AND UP1, AS SHOWN ON FRENCHMAN'S RESERVE PCD - CLUBHOUSE, RECORDED IN PLAT BOOK 94, PAGES 138 THROUGH 139, AND A REPLAT OF TRACTS L1, UP1, UP3, AND W1, AS SHOWN ON FRENCHMAN'S RESERVE PCD - PLAT "B", RECORDED IN PLAT BOOK 96, PAGES 102 THROUGH 104, AND A REPLAT OF TRACTS L1 AND L2, AS SHOWN ON FRENCHMAN'S RESERVE PCD - PLAT E, RECORDED IN PLAT BOOK 101, PAGES 1 THROUGH 6, AND A REPLAT OF TRACTS L-A, O, WA, WB, WC, WD, UP, UPB, UPC, UPD, UPE, AS SHOWN ON FRENCHMAN'S RESERVE PCD - GOLF COURSE, RECORDED IN PLAT BOOK 109, PAGES 73 THROUGH 87 PUBLIC RECORDS OF PALM BEACH COUNTY, FLORIDA

157

LYING IN SECTION 31, TOWNSHIP 41 SOUTH, RANGE 43 EAST, CITY OF PALM BEACH GARDENS, PALM BEACH COUNTY, FLORIDA

JULY 2018 SHEET 18 OF 23



ABBREVIATIONS:

C.M.	= CONCRETE MONUMENT
CB	= CHORD BEARING
CL	= CHORD LENGTH
CONC.	= CONCRETE
Δ	= DELTA ANGLE
F.K.A.	= FORMERLY KNOWN AS
FND.	= FOUND
FPL	= FLORIDA POWER & LIGHT CO.
I.D.	= IDENTIFICATION
L	= LENGTH
L.M.E.	= LAKE MAINTENANCE EASEMENT
MON.	= MONUMENT
O.R.B.	= OFFICIAL RECORD BOOK
P.B.	= PLAT BOOK
P.B. Co.	= PALM BEACH COUNTY
PGS.	= PAGES
PRM	= PERMANENT REFERENCE MONUMENT
R	= RADIUS
R/W	= RIGHT OF WAY
SUA	= SEACOAST UTILITY AUTHORITY
W.B.E.	= WETLAND BUFFER EASEMENT

LEGEND:

	DENOTES FND. 4"x4" CONC. MON. WITH DISK "PRM LB 44.31"
	DENOTES FND. 4"x4" CONC. MON. WITH DISK "PRM LB 2171"
	DENOTES FND. 4"x4" CONC. MON. WITH DISK "PRM LB 7055"
	DENOTES SET 5/8" IRON ROD WITH METAL CAP "PRM LB 44.31"
	DENOTES SET MAG NAIL & DISK "PRM LB 44.31"

LIDBERG LAND SURVEYING, INC.
LB4431 675 West Indiantown Road, Suite 200, Jupiter, Florida 33458 TEL. 561-746-8454

CAD.	K:\UST \31413 \109-73 \17-029-306 \17-029-306.DGN
REF.	
FLD.	
FB.	PG.
OFF.	CASASUS
CKD.	D.C.L.
JOB	17-029-306
DATE	JULY 2018
SHEET	18 OF 23
DWG.	D17-029P

